



Technical Information

Reach Stackers

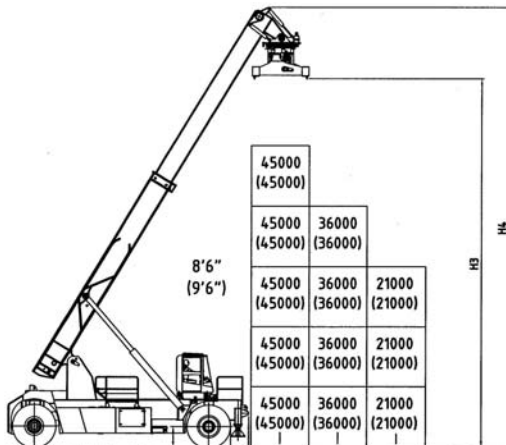
CVS FERRARI
F 481

SPECIFICATION	O1 Manufacturer			CVS FERRARI	CVS FERRARI	CVS FERRARI		
	O2 Model			F 481	F 481 PB	F 481 BH		
DIMENSIONS	O3 Lifting capacity		First Row/Second Row	Kg.	45000/36000	45000/31000	42000/32000	
	14 Overall dimensions	Length with spreader		mm.	13015	13015	13015	
		15	Width	B	mm.	4160	4160	4160
		16	Boom height, Min.	H1	mm.	4920	4920	4920
		17	Boom height, Max	H4	mm.	18900	19000	19000
		18	Height - Top of Cab	H5	mm.	3884	3884	3034 (6264 with elevat. Cab)
		19	Seat height	H	mm.	2780	2780	2900 (5214 with elevat. Cab)
DRIVING SYSTEM	40 Engine		Manufacturer - Type				CUMMINS QSM11	
	41	Rating	kW/(hp)	250 (335)	250 (335)	250 (335)		
	42	Rated Speed	RPM	2100	2100	2100		
	43	Peak Torque - at engine speed	Nm/RPM	1674 / 1400	1674 / 1400	1674 / 1400		
	44	Number Cylinders - swept volume	cm3	6 / 1080	6 / 1080	6 / 1080		
	45	Compression Ratio		16.3:1	16.3:1	16.3:1		
	51 Clutch	Clutch type		Torque converter				
52 Hydraulic pressure	For attachments		Bar	140	140	140		
53 Sound Level	Inside Cabine		dB(A)	EN 12053	EN 12053	EN 12053		

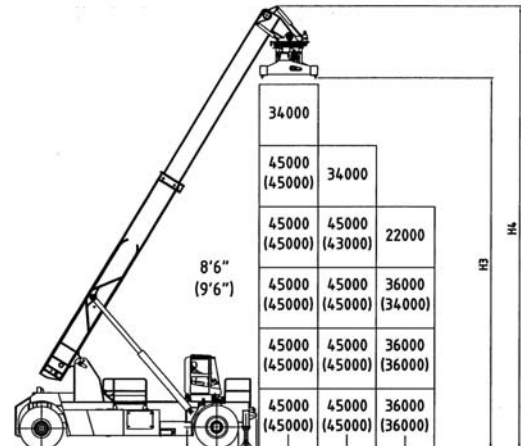
* Booster option

Ferrari mod. F 481

With stabilizers up

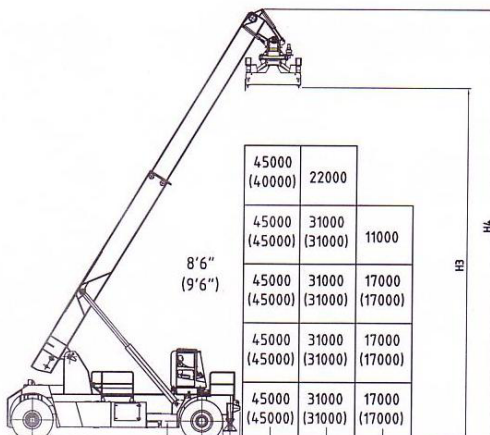


With stabilizers down

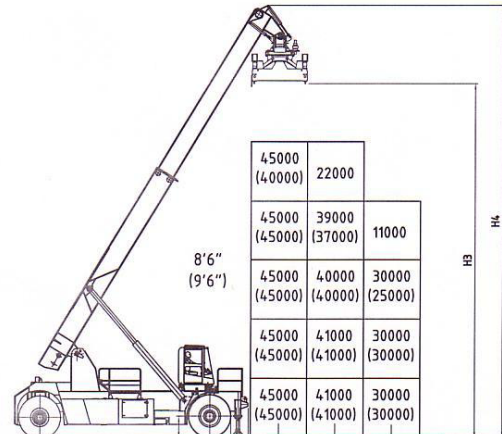


Ferrari mod. F 481 PB

With stabilizers up



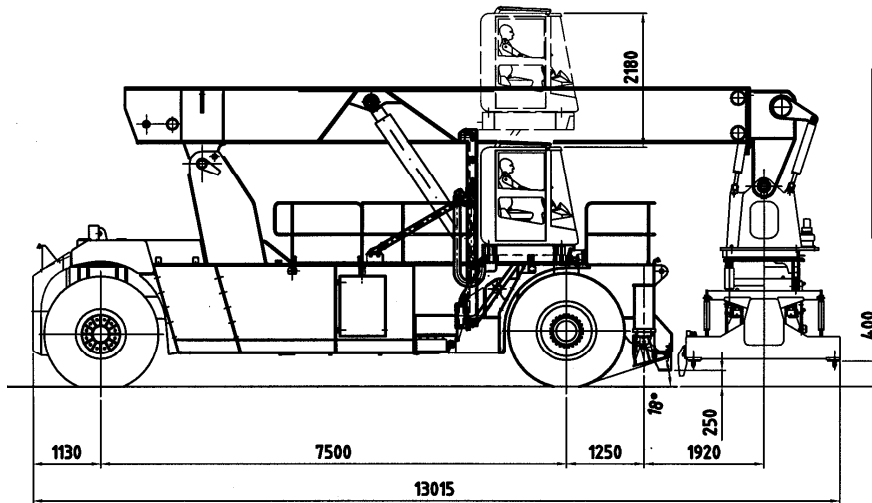
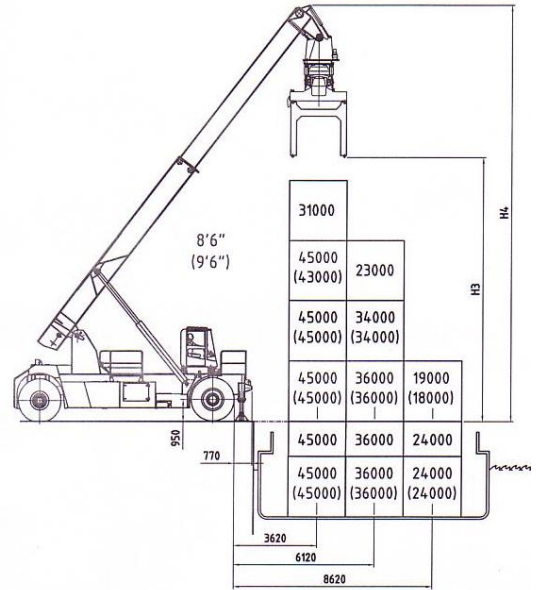
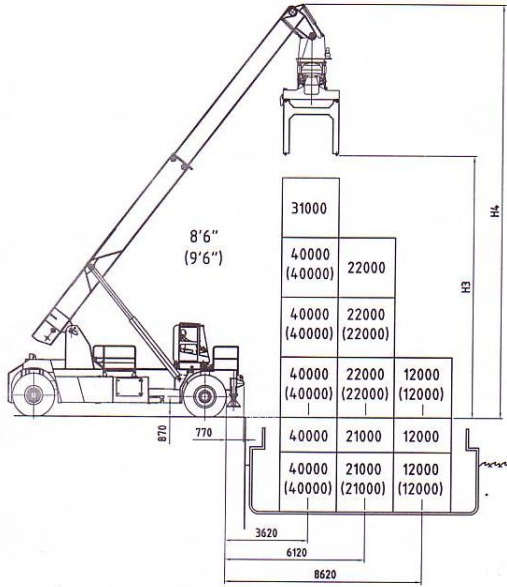
With stabilizers down



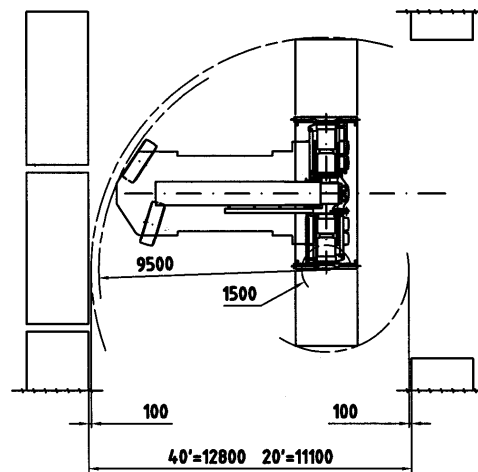
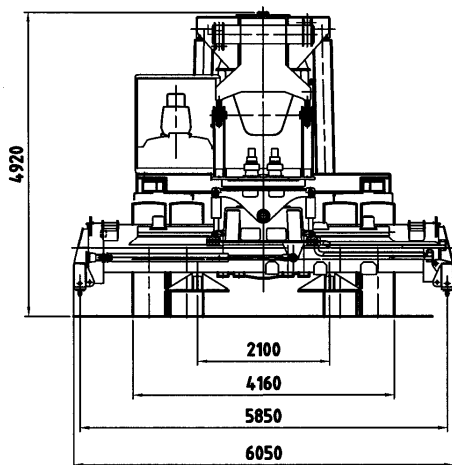
Ferrari mod. F 481 BH

With stabilizers up

With stabilizers down



Elevating cabin located in right side position and foldable twist lock extension to handle containers on barges are optional



CHASSIS

All welded box type. Torsion resistant structure. Low center of gravity.

ENGINE

CUMMINS QSM11.

Euromot step 3. Best performances and lowest fuel consumption. Low polluting level.

TRANSMISSION

CLARK TE32 - Integrated torque converter and power shift - 4 Speeds forward and 4 speeds reverse.

FRONT AXLE

Extra wide front axle for maximum stability. Hub reduction. Wet disc brake. Oil cooling. Extra heavy duty type.

REAR AXLE

Articulating axle with double acting single cylinder. Rubber shock absorbers. Full hydrostatic steering system (Orbitrol) with priority valve.

HYDRAULIC SYSTEM

Variable displacement pumps. Load sensing proportional distributor controlling telescoping and lifting. Anti-saturation LUDV system.

Electrical multifunctional joystick. Oil cooling system.

ELECTRICAL SYSTEM

Modular system with diagnostic capability. Reliable and easy to service. 24V. - Two 12V. batteries of low maintenance type.

Electric/electronic control of the machine based on CAN BUS technology.

BOOM

High torsion - High quality steel. One basic outer section and one inner telescopic section.

SPREADER:

Highest strength steel. Compact and precise. Telescoping from 20' to 40'. All functions controlled from cab. Side mechanical tilting. Damping cylinder. Safety sensors on four corners.



CVS FERRARI S.r.l. - Via Emilia - 29010 Roveleto di Cadeo (PC) ITALY
Tel. ++39.0523.503511 - Fax ++39.0523.500439
E-mail: info.mktg@cvsferrari.com

Distributed & Serviced by: